

Devnet 2010

MAORI DEVELOPMENT IN THE POST-SETTLEMENT ERA

Mason Durie
Massey University

The Parameters of Māori Development

Determinants

Process

Outcomes

Maori participation in society

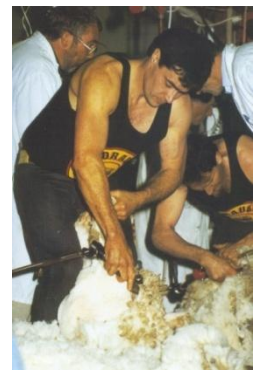
Maori participation in te ao

Maori

Transformation 1984 – 2009

Positive Māori development

- **Treaty of Waitangi**
 - Legislation, settlements
- **Cultural affirmation**
 - Te reo Māori, Mātauranga
- **Social Equity**
 - Service delivery
 - Maori models health, education
- **Economic self sufficiency**
 - Iwi business ventures, SMEs
 - Ag/hort revitalisation
 - Diversification

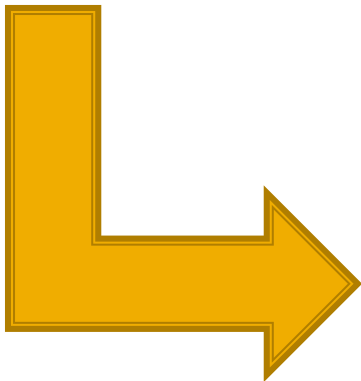


The Most Recent Quarter-Century of Māori Development

1984 – 2009
Positive Māori
Development

The Next Quarter-Century of Māori Development

1984 – 2009
Positive Māori
Development



2010 - 2035
Sustainable Māori Economies
&
Whānau Ora

Transformation 2010-2035

Sustainable Māori Economies

- **Sustainable**

- Enduring & growing

- **Māori**

- Iwi, Māori entities, Māori people
- Cultural distinctiveness

- **Economies**

- Land-based, water-based, commodities, other assets
- Intellectual/cultural resources
 - Part of an expanding asset base

```
graph LR; S[Sustainable] --> ME[The Māori Estate]; M[Māori] --> ME; E[Economies] --> ME;
```

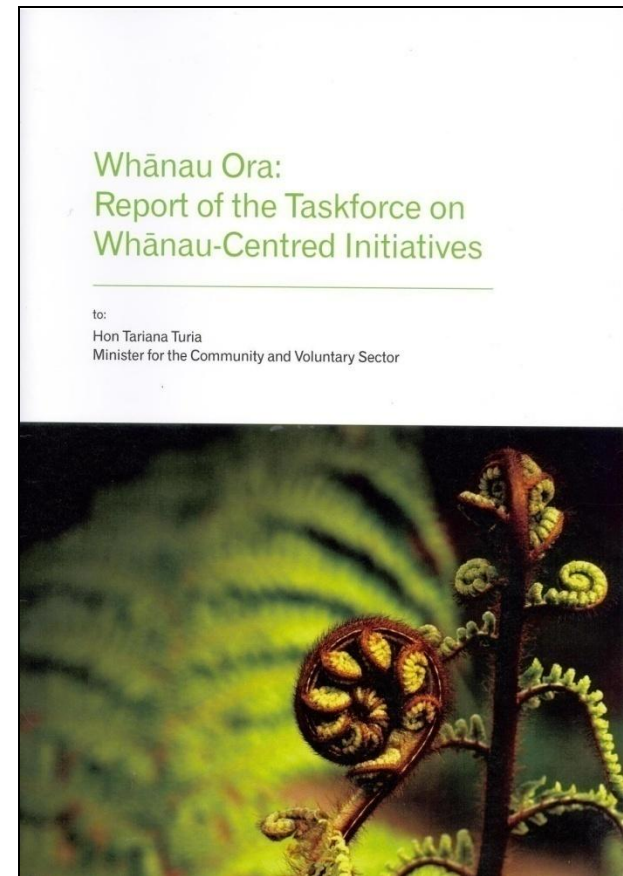
The Māori
Estate

2009 Taskforce on Whānau Centred Initiatives

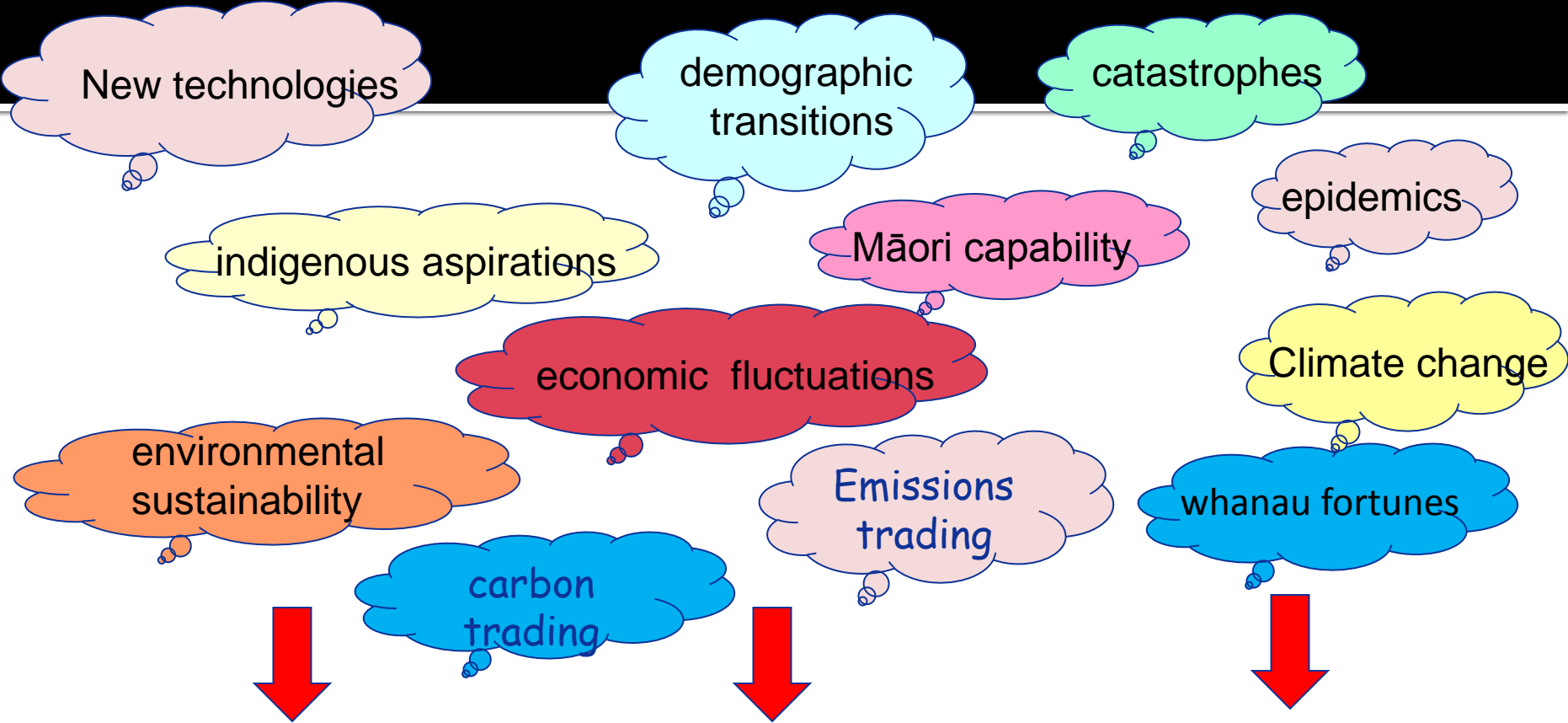
‘The main objective is to construct an evidence-based framework that will lead to:

- ▶ Strengthened whānau capabilities
- ▶ An integrated approach to whānau wellbeing
- ▶ Collaborative relationships between state agencies in relation to whānau services
- ▶ Relationships between government & community agencies that are broader than contractual
- ▶ Improved cost-effectiveness and value for money’

▶ *Hon Tariana Turia*



Maori 2035 – The Determinants of Change



- Trends
- Trade-offs

Trends that can be predicted

- Climate change
- Global over-population & resource depletion
- World-wide economic fluctuations
- International markets
- Technological innovation
- Increased competition in NZ
- Demographic change



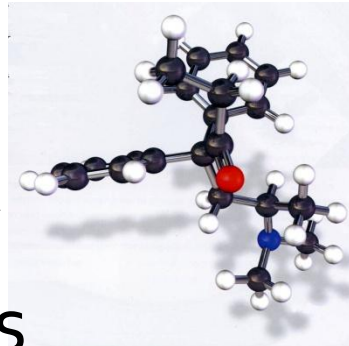
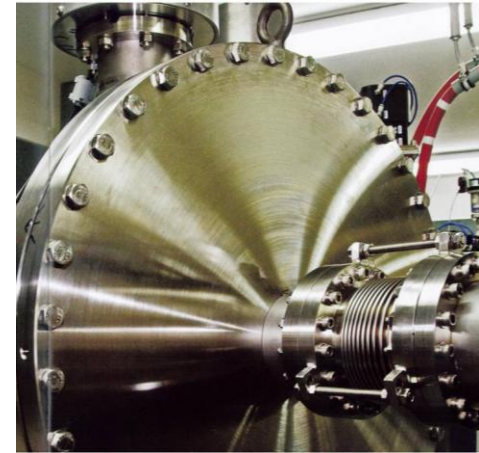
Trending towards Catastrophic Events

- Warfare
- Oil spills
- Earthquakes
- Epidemics
 - Human
 - Live stock
 - Fish
- Floods and droughts



Technological advances

- Communication technology
- Land technologies
- Bio-technologies
- Genetic modification
- Nanno-technology
- Food technology
- Product technology
- Energy technologies



Global (& National) Impacts

‘the Māori estate will not be immune from global impacts:

- world food shortages
- global forms of governance
- climate change’

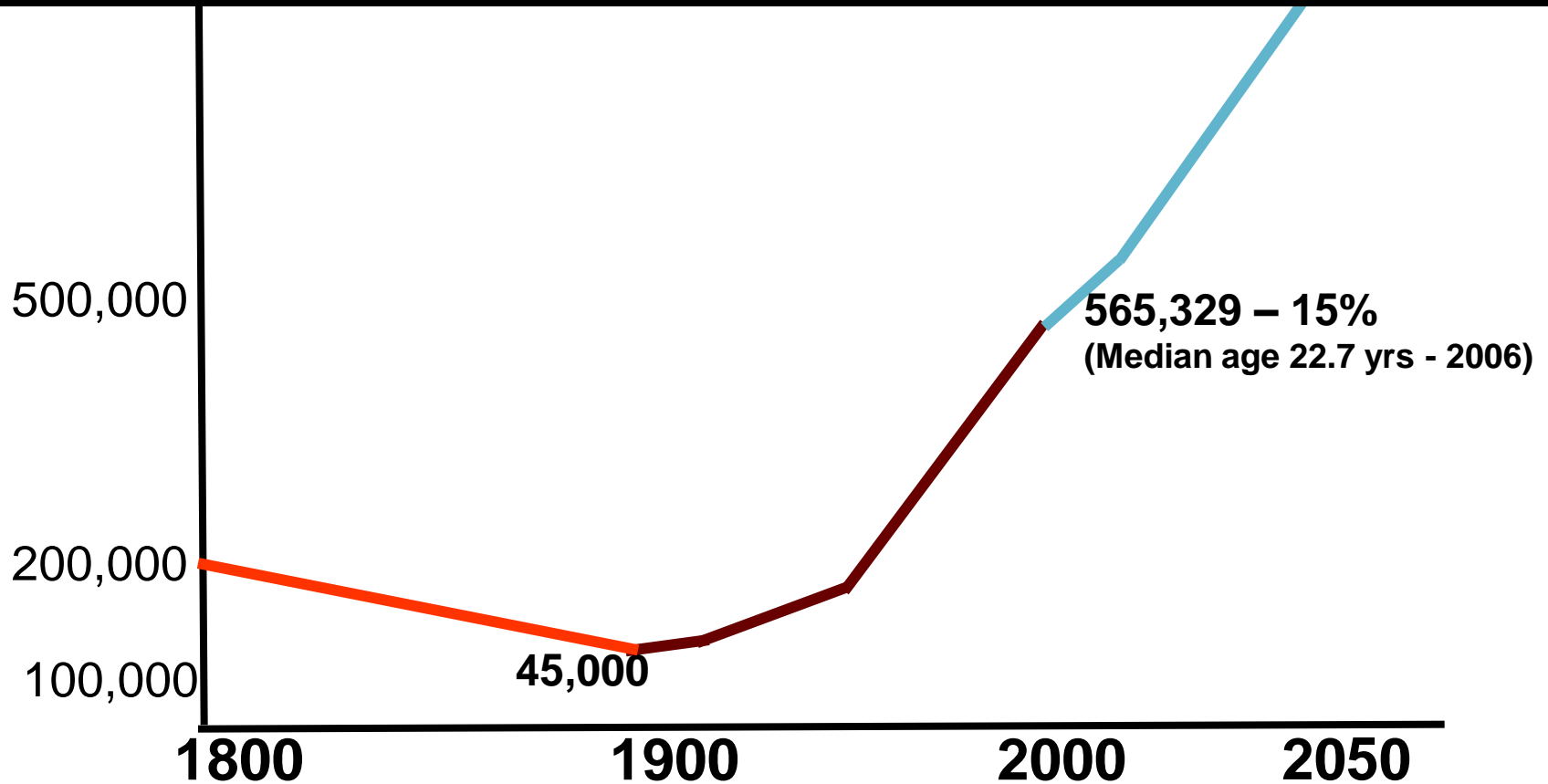


‘Nor will the estate be divorced from national policies or government legislation.’

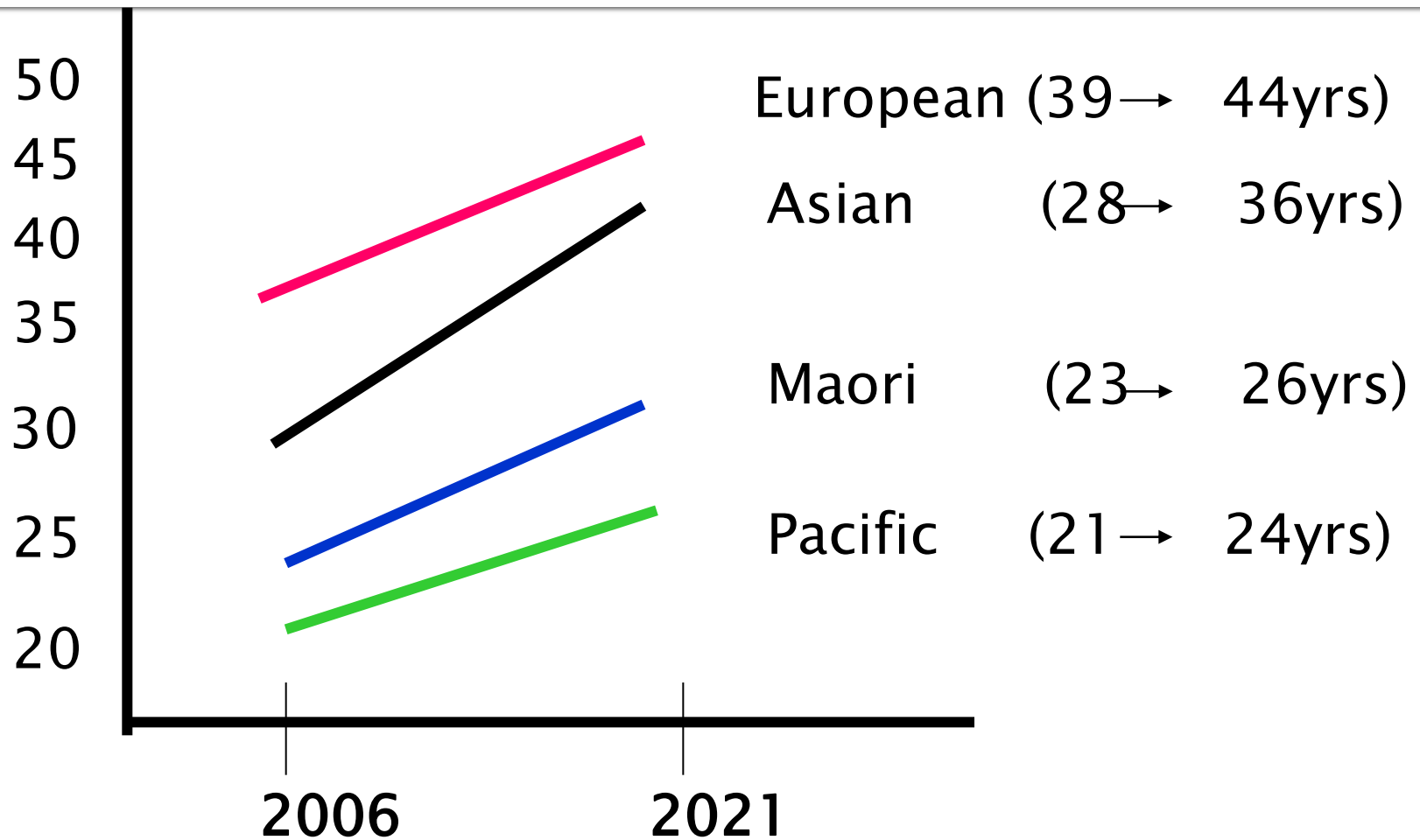


Exploring the Future

Māori Demographic Transitions



Demographic Trends – Median Age Ethnic Groups



Exploring the Future

Iwi Aspirations in the Post-settlement Era

- **Economic development**

- Asset retention & growth
- Asset diversity

- **Cultural affirmation**

- Marae
- Tikanga, Kawa, Mātauranga, Te reo Māori
- Whānau and hapū – intergenerational transmissions

- **Social equity**

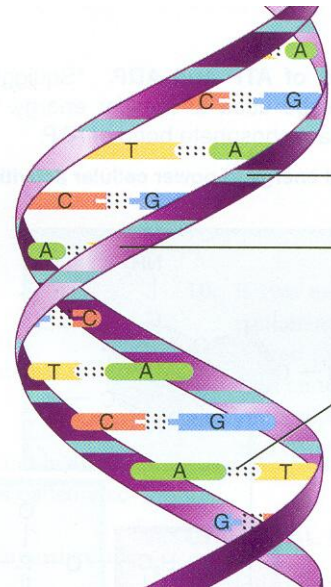
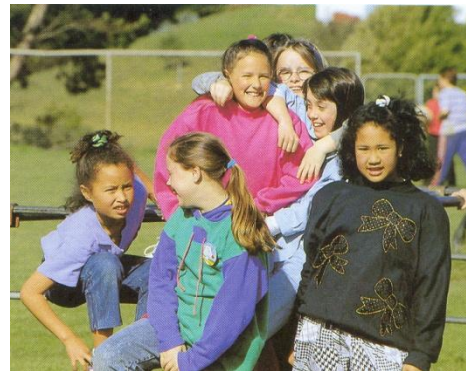
- Health & wellbeing – e.g. Whānau Ora
- Full participation in society, education & the economy

Making the future happen

- It takes a generation (25 years) to effect transformations
- Shifts in direction will be necessary
 - Iwi, Māori aspirations
 - Global and national partners
 - A different relationship with Government (adversarial → mutual benefits)
 - Co-ordinated, future - focussed leadership

Towards 2035

- Growing the estate
- Identifying the beneficiaries
- Entitlements to succeed
- Future proofing the estate



Growing the estate

Deterrents of Growth

- global warming, & global catastrophes
- economic crises
- political ideologies
- intolerance of indigeneity
- resource appropriation
- legislative frameworks
 - Ture Whenua Māori ?
- short term gains
- internal competition

Growing the estate

Deterrents of Growth

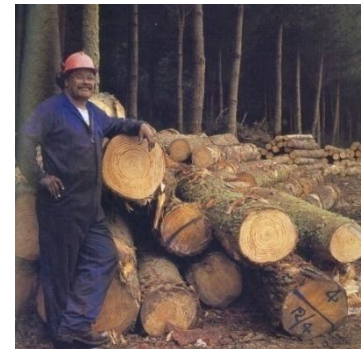
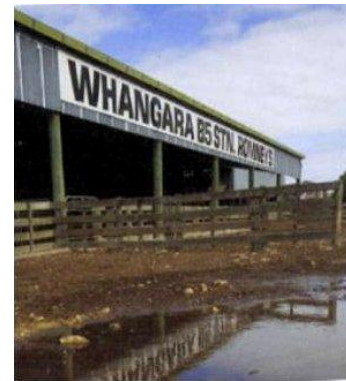
- global warming, & global catastrophes
- economic crises
- political ideologies
- intolerance of indigeneity
- resource appropriation
- legislative frameworks
 - Ture Whenua Māori ?
- short term gains
- internal competition

Stimulants for Growth

- global markets
- applied technologies
- global indigenous networks
- good faith bargaining
- long term benefits
- 'value adding' to customary resources e.g. Land, red meat
- enabling legislation
- economies of scale

Growing the Estate Products and Productivity

- Consumer driven (rather than commodity driven)
- Adding value to current products
 - Destination preferences, tastes, differentiated quality product
- Deciding the most sustainable & marketable products
 - mutton, beef, wool, milk products, wood, fruit, veges,, energy, real estate
- Cultural 'branding'



Beneficiaries

- Retention of assets by a collective body
or
- Individual ownership
or
- Ownership by all Māori

The process for determining succession:

Will the Māori Land Court process always be appropriate ?

Sustainability of the Māori Estate will depend on:

- A futures (25 year) focus
- Cultural foundations
- Wise governance
- National Māori leadership
- Mutually beneficial relationships & trading partners
- Estate growth with sustainable markets in mind
- Expertise, capability, research & development
- Strong, well informed whānau

WHANAU ORA – WELL FAMILIES

Balancing economic growth with
social development

The Whanau Ora aims:

Increase the capabilities of whanau

Improve outcomes for whanau

Provide an integrated approach to whanau development

Whanau Ora requires attitudinal changes

| <i>From</i> | <i>To</i> |
|--|--|
| ➤ an examination of deficits | ✓ the discovery of strengths |
| ➤ a focus on inputs | ✓ a focus on outcomes for whanau |
| ➤ uncoordinated and fragmented services | ✓ integrated models for funding and delivering services |

Whanau capabilities

- Manaakitanga - the capacity to care
- Pupuri Taonga - capacity for guardianship
- Whakamana - capacity to empower whānau members
- Whakatakato kaupapa
- capacity for planning
- Whakapūmau tikanga
- capacity to transmit culture, knowledge,
values, assets between generations
- Whakawhanaungatanga
- capacity for reaching consensus

Whānau Outcomes

- ▶ Whānau self management
- ▶ Healthy whānau lifestyles
- ▶ Full whānau participation in society
- ▶ Confident whānau participation in te ao Maori
- ▶ Whānau economic security
- ▶ Whānau cohesion

An Integrated Approach to Whanau Development

- Integrated services
- Cross sectoral
- Inter-disciplinary
- Whanau centred
- Social and economic
- Cultural and environmental
- Multi-dimensional contributions
- Indicators that measure best results for whanau

Towards 2035 – Changing Direction

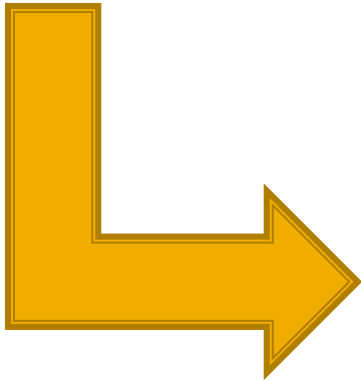
- | | | | |
|-----|----------------------|----|-------------------------------|
| 1. | Local economies | vs | global economies |
| 2. | Land retention | vs | investment in other resources |
| 3. | Pastoral farming | vs | energy farming |
| 4. | Multiple authorities | vs | integrated solutions |
| 5. | Heavy regulation | vs | entrepreneurial freedom |
| 6. | Supportive goals | vs | goals that empower |
| 7. | Individual health | vs | whanau wellbeing |
| 8. | Treatment and care | vs | whanau self management |
| 9. | Current priorities | vs | future generations |
| 10. | Intuitive solutions | vs | research & development |

DEVNET 2010

**GLOBAL PERSPECTIVES AND
LOCAL SOLUTIONS**

The Next Quarter-Century of Māori Development

1984 – 2009
Positive Māori
Development



2010 - 2035
Sustainable Māori Economies
&
Whānau Ora